

CRIMINAL CASE MANAGEMENT

CREATING A JUST AND PREDICTABLE PROCESS



TIMELINESS

IMPROVE THE PREDICTABILITY, EFFICIENCY, & TIMELY DISPOSITION OF ALL CRIMINAL CASES

FAIRNESS

PROMOTE CONTINUITY & REGULARITY OF CASE PROCESSING

PROCEDURES

ENSURE EARLY & CONTINUOUS JUDICIAL CONTROL OF CASES TO PROMOTE PROCEDURAL JUSTICE

RIGHTS

ADHERE TO A DEFENDANT'S RIGHT TO A SPEEDY TRIAL

STANDARDS

ADOPT UNIFORM & CONSISTENT TIME STANDARDS FOR CRIMINAL CASES

COLLABORATION

ENCOURAGE COLLABORATION BETWEEN STAKEHOLDERS—COURT, PROSECUTOR, & DEFENSE

JUSTICE

SAFEGUARD JUST & EFFECTIVE DISPOSITION OF CRIMINAL CASES

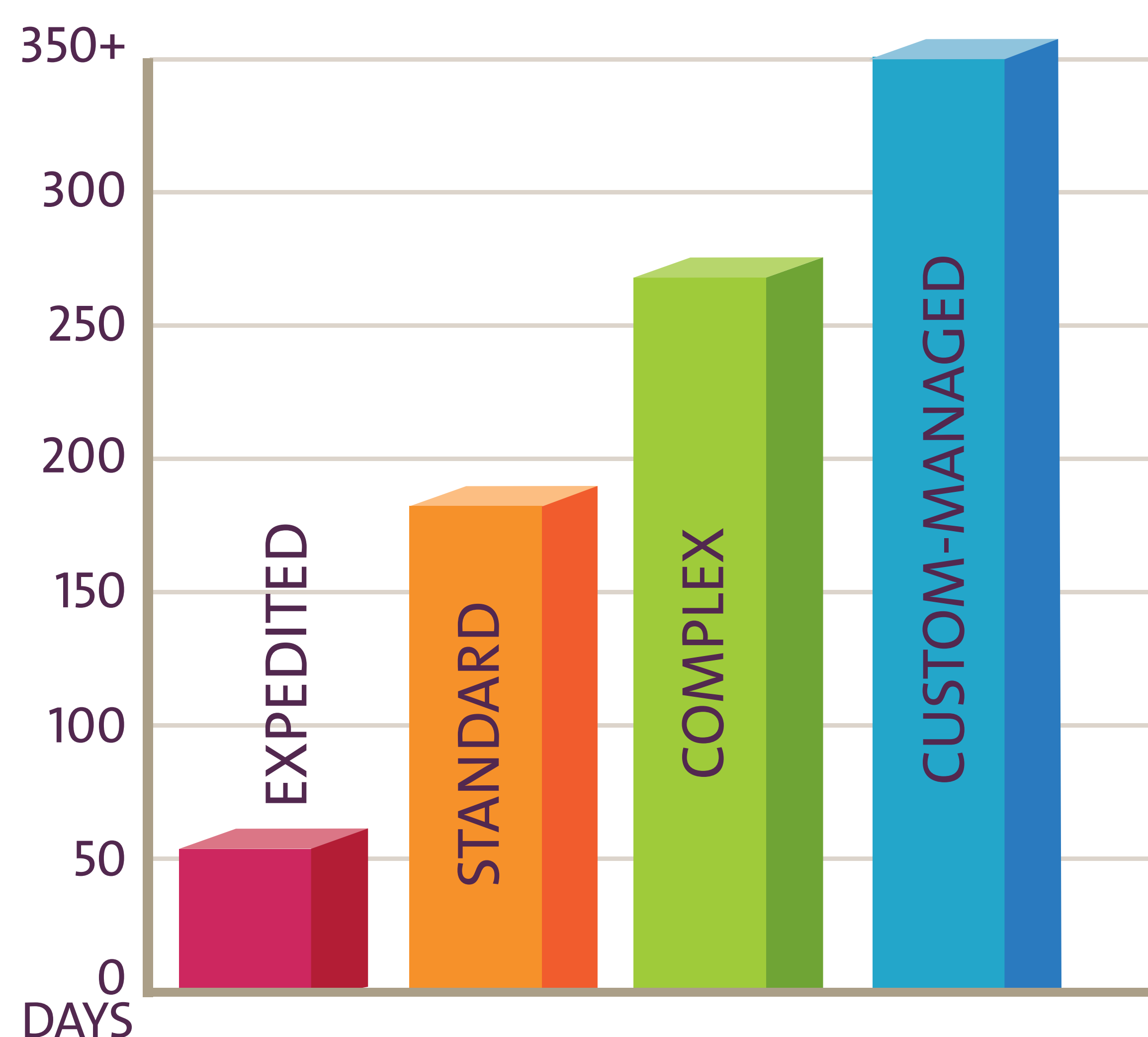
TRACKS

CRIMINAL CASES FOLLOW DISTINCT TRACKS TO RESOLUTION



- TRACK 1**
SIMPLE/EXPEDITED CASES (30-40%)
- TRACK 2**
STANDARD/NON-VIOLENT FELONIES (40-50%)
- TRACK 3**
COMPLEX/VIOLENT FELONIES (8-10%)
- TRACK 4**
CUSTOM MANAGED FELONIES (1-2%)

EXPECTED DAYS TO DISPOSITION



TRACK 5
POST ADJUDICATION CASES

NON-ORIGINAL CASES

TRACK 6
SPECIALTY COURT CASES

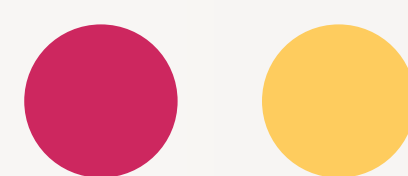
CASE MANAGEMENT IN ACTION

- PRETRIAL REFORM**
CITATIONS, BAIL & RELEASE
- PRESENTENCE INVESTIGATIONS**
SCOPE & TIME
- TIME TO DISPOSITION**
BACKLOG & DELAY
- STATE PRISON TRANSFERS**
TIME DELAYS
- PROBATION REVOCATIONS**
REPORTS & TIMING

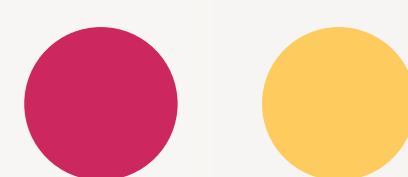
LOUISIANA (NEW ORLEANS)



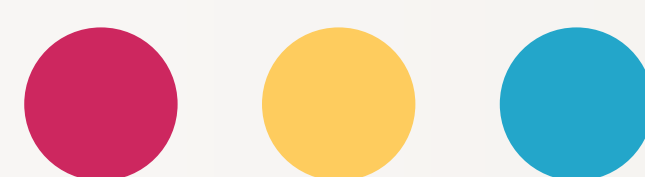
TENNESSEE (SHELBY COUNTY)



MONTANA (MISSOULA COUNTY)



ARIZONA (PIMA COUNTY)



SOUTH DAKOTA (MINNEHAHA & PENNINGTON)



CALIFORNIA (SAN FRANCISCO)



NEVADA (CLARK COUNTY)



TEXAS (HARRIS COUNTY)



Supported by the John D. and Catherine T. MacArthur Foundation

THE JUSTICE THINK
MANAGEMENT INSPIRE
INSTITUTE CHANGE

PRESENTED BY THE JUSTICE MANAGEMENT INSTITUTE | INFO@JMIJUSTICE.ORG