

# MEANINGFUL COMMUNITY ENGAGEMENT

Safety and Justice Challenge Network Meeting  
October 2016



Supported by the John D. and Catherine T. MacArthur Foundation

# PIMA COUNTY COMMUNITY ENGAGEMENT

Terrance Cheung  
Program Manager

# History of Community Engagement

Sonoran Desert Conservation Plan

Juvenile Court Community Collaborative

Community Justice Boards

Reentry Coalition

Bond Advisory Committee



Animal Care Advisory Committee

# Planning Process



# Planning Process



Dinner  
Dialogue

Community  
Open House

Judge  
Andre Davis

# Collaborative Application

**Pima County Safety & Justice Challenge  
Community Collaborative  
Application Form**

*All information is confidential and will be used ONLY to review committee applications.*

Name: \_\_\_\_\_

Mailing Address: \_\_\_\_\_

City of Residence: \_\_\_\_\_ Zip: \_\_\_\_\_

**About your interest in the Community Collaborative -**  
Briefly, please explain your interest in serving on the Community Collaborative. Why does this work seem interesting, exciting, or important to you? Please include details about your experiences or expertise related to incarceration or the justice system *(Gray box will expand as you type)*.

Tell us about any skills, experiences, or resources you believe you will bring to the Community Collaborative *(Gray box will expand as you type)*.

**Creating and Inclusive and Diverse Collaborative –**  
We are committed to creating a Collaborative that is inclusive and diverse so please provide the following.

Gender: \_\_\_\_\_

Ethnicity: What do you consider to be your ethnicity?

African American <input type="checkbox"/>	Native American <input type="checkbox"/>	Pacific Islander <input type="checkbox"/>
East Indian/South Asian <input type="checkbox"/>	Arab/Middle Eastern <input type="checkbox"/>	Asian American <input type="checkbox"/>
Latino/a <input type="checkbox"/>	Caucasian <input type="checkbox"/>	Mixed Race <input type="checkbox"/>

Other *(Please describe)* \_\_\_\_\_

**Submission Instructions:**

- Application forms must be received not later than 5 p.m. on **July 22, 2016**.
- If Possible, please submit your application by email to [terrance.cheung@pima.gov](mailto:terrance.cheung@pima.gov).
- Applicants will be notified by **September 19, 2016**.

**Questions? Contact:**

- Ellen Wheeler, Pima County Assistant County Administrator  
Office: 520-724-8849 Email: [Ellen.Wheeler@pima.gov](mailto:Ellen.Wheeler@pima.gov)
- Terrance Cheung, Pima County Program Manager  
Office: 520-724-8770 Email: [Terrance.Cheung@pima.gov](mailto:Terrance.Cheung@pima.gov)

- Circulated 1.5 months
- Website/Twitter/Facebook
- News outlets
- Stakeholder groups
- Presented at Community Meetings
  - Faith Community
  - YWCA
  - Juvenile Justice Collaborative
  - Homeless Work Groups

# Community Collaborative

Safety + Justice  
Community  
Collaborative

Steering  
Committee

## 32 Members

Formerly Incarcerated/Family Members  
Community Residents/Advocates  
Service Providers  
Justice System Stakeholders  
Tribal Nation Representatives  
Victim Advocate

## Responsibilities

Meets quarterly  
Reviews data results/Challenge updates  
Provides strategic analysis  
Assures integrity & credibility of process  
Develops Community Outreach/Education activities  
Commitment to leadership development  
S + J Collaborative Ambassadors  
Attendance at MacArthur Foundation All-Sites Conference (1)  
*\*\*Agreements made by consensus\*\**

## Staff

Terrance Cheung – Program Manager  
Jean Campbell - Data Coordinator

# Steering Committee

Safety + Justice  
Community  
Collaborative

Steering  
Committee

## 9 Members (5 Community/4 Public Agency)

Selected by Collaborative peers

### Responsibilities

Meets at least 6x a year

Develops Community Collaborative meeting agendas

Reviews data monitoring results

Provides informed oversight to process

Availability to Implementation Team

Reviews Operating Guidelines

Helps design Leadership Institute

**Assisting with 5/16 – 5/17, 2017 Conference –  
“Decriminalizing Mental Illness”**

***\*\*Agreements made by consensus\*\****

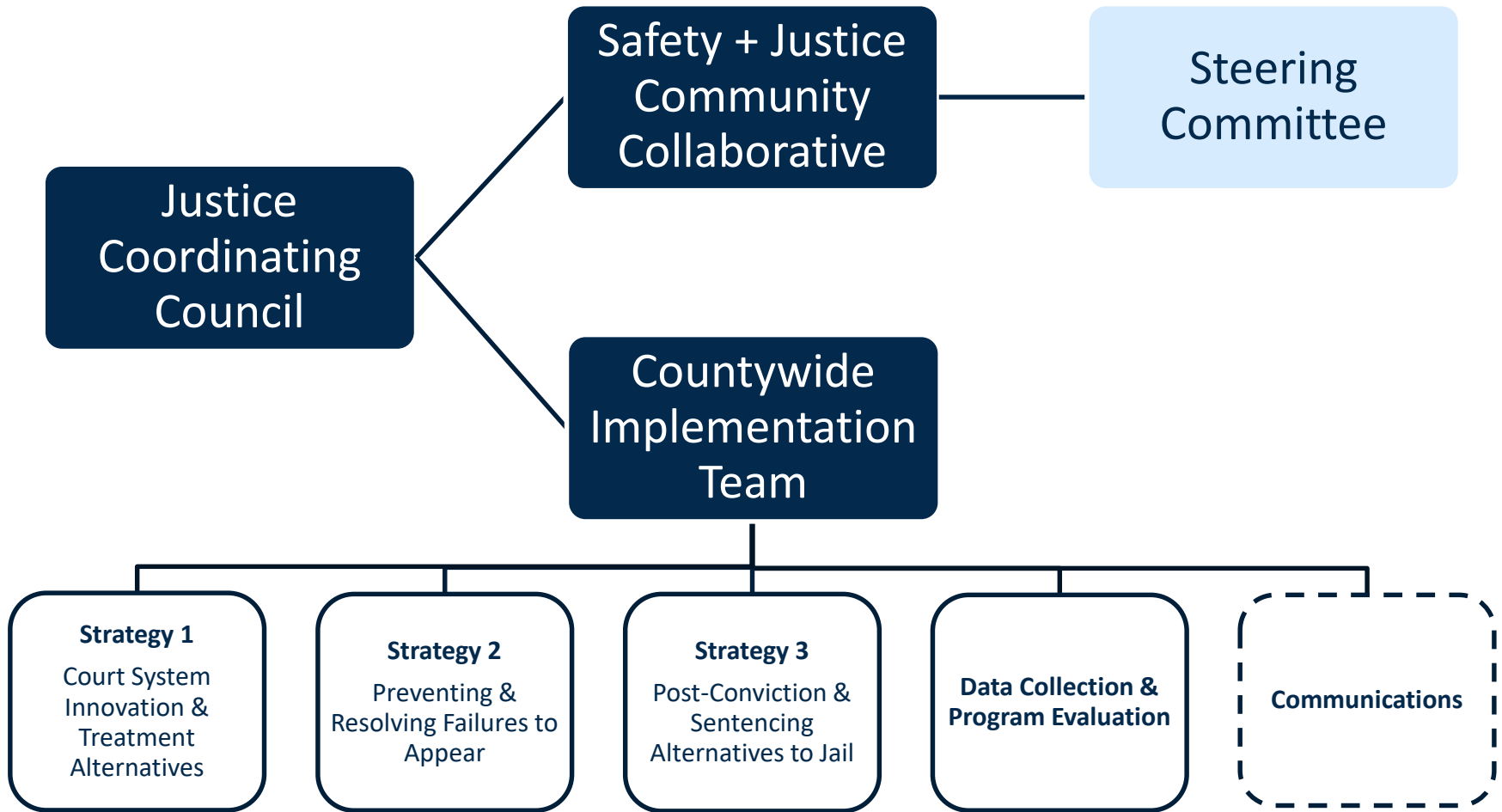
### Staff

Terrance Cheung - Program Manager

Jean Campbell – Data Coordinator



# Governance Structure



# Selection Committee



- 75+ APPLICATIONS!!!
- Race/Gender
- Experience with incarceration
- Ability to work as a Collaborative
- Community representation

## Selection Committee Members

- Superior Court
- Sheriff's Department
- Tucson Police Department
- County Administration
- Pretrial Services
- Urban League
- YWCA

# Community Collaborative

\* = Steering Committee Member

## Public Agency

Karla Avalos*	Tucson Mayor
	Jonathan Rothschild
Matt Pate	Tucson Councilmember
	Richard Fimbres
Jason Winsky	Tucson Police Department
Hon. Tony Riojas*	Tucson City Court
Amelia Craig-Cramer	Pima County Attorney's Office
Danna Whiting	Pima County Behavioral Health
Lori Lefferts	Pima County
	Public Defense Services
Lt. Scott Lowing	Pima County
	Sheriff's Department
Domingo Corona*	Pima Pretrial Services,
	Superior Court
Ron Overholt	Pima Superior Court
Doug Kooi	Pima County
	Consolidated Justice Courts
Yvette Tucker	Regional Behavioral Health Authority - Cenpatico
Alfred L. Urbina, Esq.*	Pascua Yaqui Tribe
To be Announced	Tohono O'odham Nation

## Community

Lyle Daychild*	American Friends Service Committee
Thea Dixon	Community Partners, Inc.
Anna	Emerge!
Harper-Guerrero*	
Sally Hueston	HOPE, Inc.
Genevieve James	Marana Health Care Counseling and Wellness Center
	Primavera
Keith Jeffery	UA RISE Health & Wellness Center
Michele Keller*	Retired City Court Judge
	UA Center for Climate Adaptation Science and Solutions
Hon. Michael Lex	Pima Prevention Partnership
Chad Marchand	Kolbe Society
	Advisory Board Member
Manny Mejias*	NAACP
Kona Morrison	
	Retired Federal Judge
Guenevere	Interdenominational Minister's Alliance
Nelson-Melby	UA Rogers College of Law
Hon. Charles Pyle*	Community Bridges, Inc.
Grady Scott	Arizona Serve of Prescott College
Andrew Silverman	
Rudy Trinidad	
Celia Williams	
Gerald Williams	

# Lessons Learned

- Identify key community influencers in your community
- Be ready to engage in healthy discussion with community members
- Always be transparent
- Always be honest
- Go to the community instead of waiting for the community to come to you
- Be ready to respect and follow decisions made by the Collaborative
- True collaboration and trust building takes time
- Meaningful engagement is unique to your community



# Follow us



- Website  
[www.pima.gov/safetyandjustice](http://www.pima.gov/safetyandjustice)



- Facebook  
Pima County Safety and Justice Challenge



- Twitter – Pima Safety + Justice  
[@PCSafetyJustice](https://twitter.com/PCSafetyJustice)



- Flickr  
[www.flickr.com/photos/pimacounty/collections](http://www.flickr.com/photos/pimacounty/collections)

# Contact Information

**Ellen Wheeler**

Assistant County Administrator

520-724-8849 Office

[Ellen.Wheeler@pima.gov](mailto:Ellen.Wheeler@pima.gov)



**Terrance Cheung**

Program Manager

520-724-8770 Office

520-247-5905 Cell

[Terrance.Cheung@pima.gov](mailto:Terrance.Cheung@pima.gov)

**Jean Campbell**

Data Coordinator

(520) 724-8311 Office

[Jean.Campbell@pima.gov](mailto:Jean.Campbell@pima.gov)



[SafetyAndJusticeChallenge.org](http://SafetyAndJusticeChallenge.org)

# LESSONS LEARNED IN MULTNOMAH COUNTY

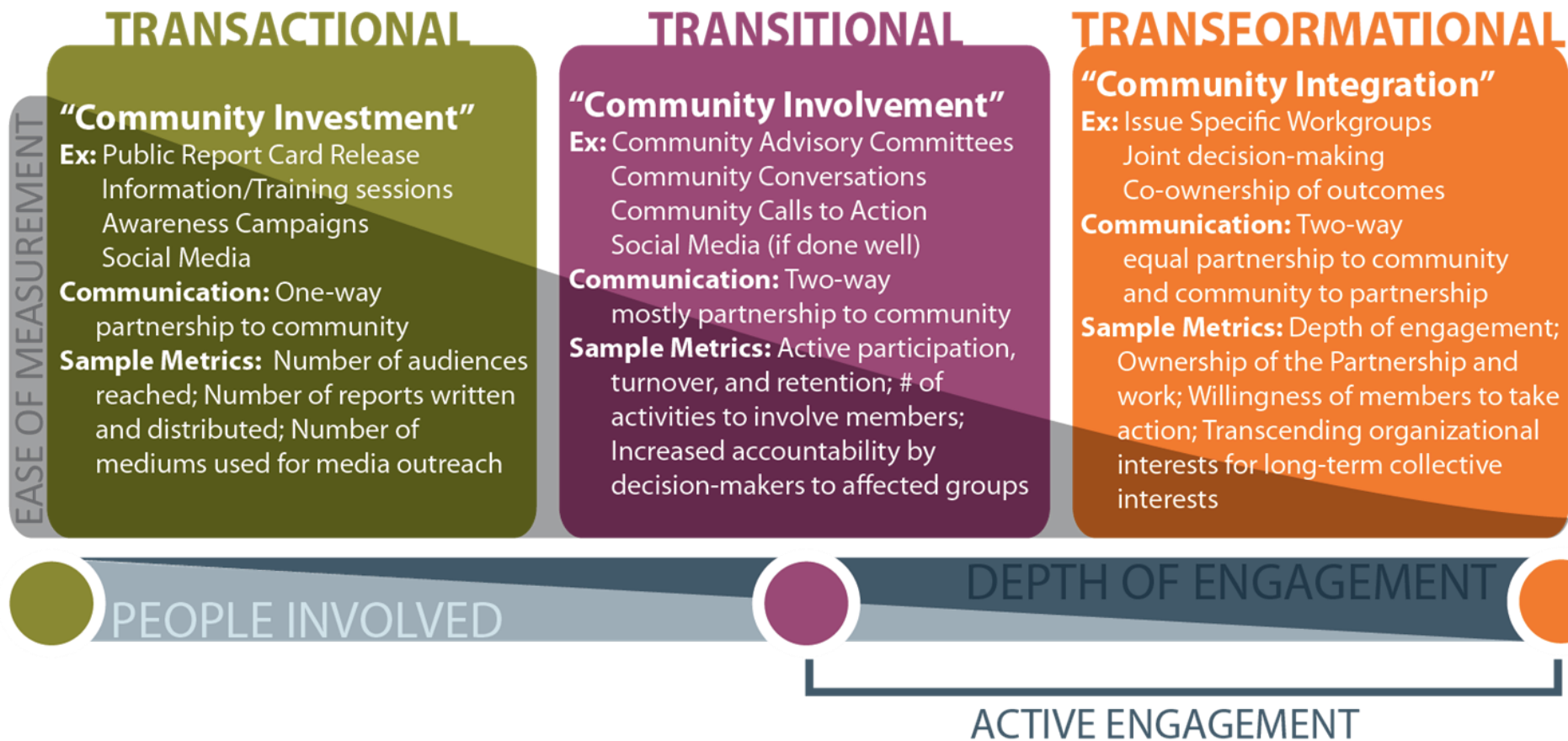
Abbey Stamp, Executive Director  
Multnomah County Local Public Safety  
Coordinating Council

# Community engagement in Multnomah county

- Grounded and thriving in healthcare
- Some movement into criminal justice
  - ✓ STRYVE
  - ✓ Defending Childhood Initiative
  - ✓ OJJDP Comprehensive Gang Assessment
- Goal: Authentic, inclusive engagement of community members



# Community Engagement Continuum



© Strive 2012  
 Content adapted from Bowen et al, *When Suits Meet Roots*. 2010  
 Sample Metrics adapted from Pastor et al, *TRANSACTIONS, TRANSFORMATIONS, TRANSLATIONS: Metrics That Matter for Building, Scaling, and Funding Social Movements*. 2011

# SJC POLICY TEAM

- ◆ Struggled to translate to criminal world – few existing models
- ◆ Good intentions
- ◆ Desire to do system reform differently
- ◆ “We \*\*\*\*ed it up alone, so we shouldn’t try to fix it alone.”



# SJC Strategy

- Co-create strategies to reduce RED
- Commit to the journey, without knowing destination
- Clarity/honesty on level of engagement
- Fund Community Health Workers, facilitation, event space, child care, food, transportation, stipends

# But we are a partner site

- Plan “B”:
  - Use community engagement approaches during LEAD development
  - Listening sessions
  - Plan for future funding via MacArthur or other sources



# Thank you



[SafetyAndJusticeChallenge.org](http://SafetyAndJusticeChallenge.org)