

CASE PROCESSING ASSESSMENT

What to Expect

March 14, 2018

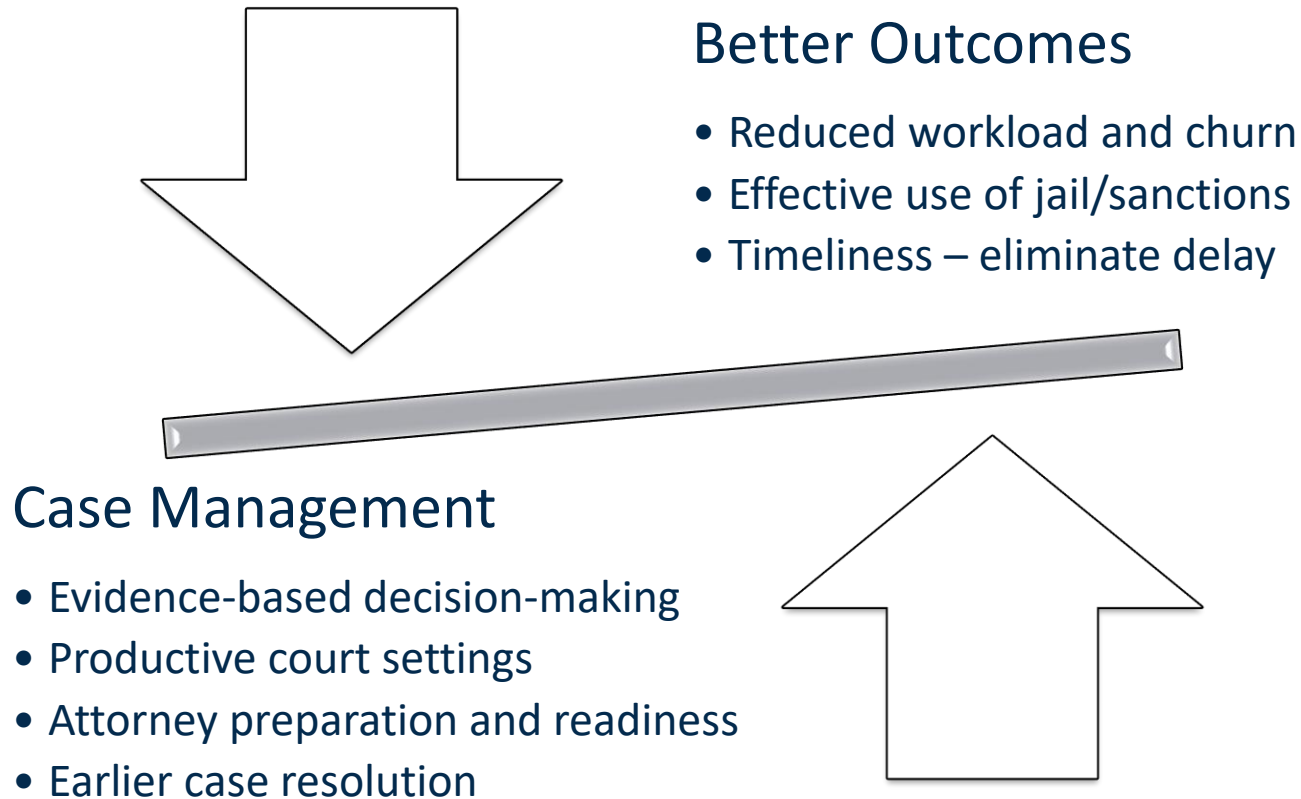


Supported by the John D. and Catherine T. MacArthur Foundation

Poll Questions

- Do you know, on average, how long it takes for a felony or a misdemeanor case to be disposed (from charging to sentencing) in your jurisdiction? Yes/No
- How effective do you think your jurisdiction is at disposing cases in a timely manner?
 - Very Effective
 - Somewhat Effective
 - Not Effective

Why Do We Care about Case Processing?

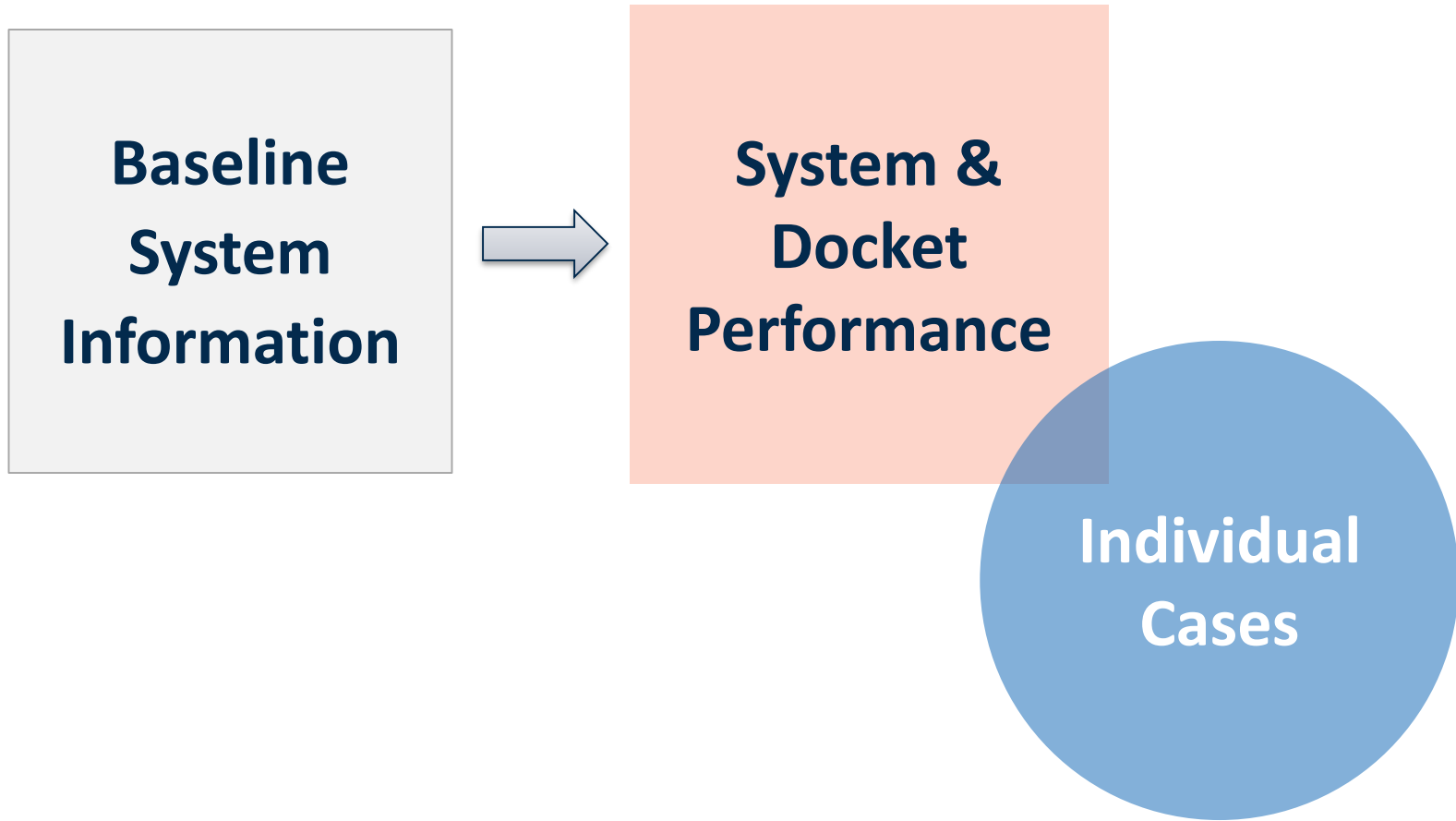


Results

And for all this you get...

- Increased public trust and confidence
- Reduced crime and recidivism
- Improved system performance
- Less cost

Overview of the Process



Baseline System Information

- Filings and dispositions
 - Clearance rate
 - Active pending cases (inventory)
 - Formal or de facto time standards
-
- By time periods
 - By docket/case type
 - By judge (some courts)

System & Docket Performance

- Clearance rate
 - Age of active pending cases
 - Time to disposition
 - Hearing and trial rates
 - Postponement rates
-
- Inventory and analysis of current performance
 - Analysis of trends across times
 - External and internal factors impacting performance

Individual Cases

- How old is this case? When does it go into backlog (considered delayed)?
- How many postponements/continuances have been granted?
- How long since the last hearing? Until the next hearing?
- How many hearings have been conducted?
- How many trials have been set without resolution?

Interpretation



- Data issues
- Processing issues
- System issues
- Resource issues

DATA ELEMENTS

Units of Analysis

- Macro: Aggregate level data
- Micro: Individual level data

Poll Questions

- Are aggregate level data from the courts in your jurisdiction available?
 - Yes, No, Don't Know
- How are cases counted in your jurisdiction?
 - By defendant (one record for all charges arising from a single incident)
 - By charge (each charge against an individual is counted)
 - Different parts of the system count differently
 - Don't know

Aggregate Level Data Needed

- By Major Case Type
 - Annual number of cases filed
 - Annual number of cases disposed by disposition type
 - Annual number of active pending cases
 - Annual clearance rate
 - Annual time to disposition for 75%, 90%, and 98% of cases (average can be derived)
- Minimum 5 years of data

Individual-level Data

- By defendant/unique case
 - Case status
 - Case type
 - Filing date
 - Disposition date
 - Disposition type
 - Case event type and date
 - Court/courtroom/judge/docket

Individual-level Data (cont'd)

- Jail Data by Detainee/Inmate
 - Booking date
 - Release date
 - Jail admission status: pretrial, sentenced, violation

Sample Data Record

ID#	FILEDATE	STATUS	DISPDATE	CASETYPE	#EVENTS	HEARING TYPE	HEARING DATE	CONTD	BOOKDATE	RELEASEDATE
39857	2/15/2016	DISP	12/1/2017	F	8	TRIAL	2/17/2016		2/15/2016	2/20/2016
67281	5/19/2017	DISP	6/4/2017	M	3	1STAPP	6/4/2017		5/19/2017	6/4/2017
38471	12/4/2016	OPEN		F	6	PTH		Y		

QUANTITATIVE ANALYSIS

First Stage Analysis

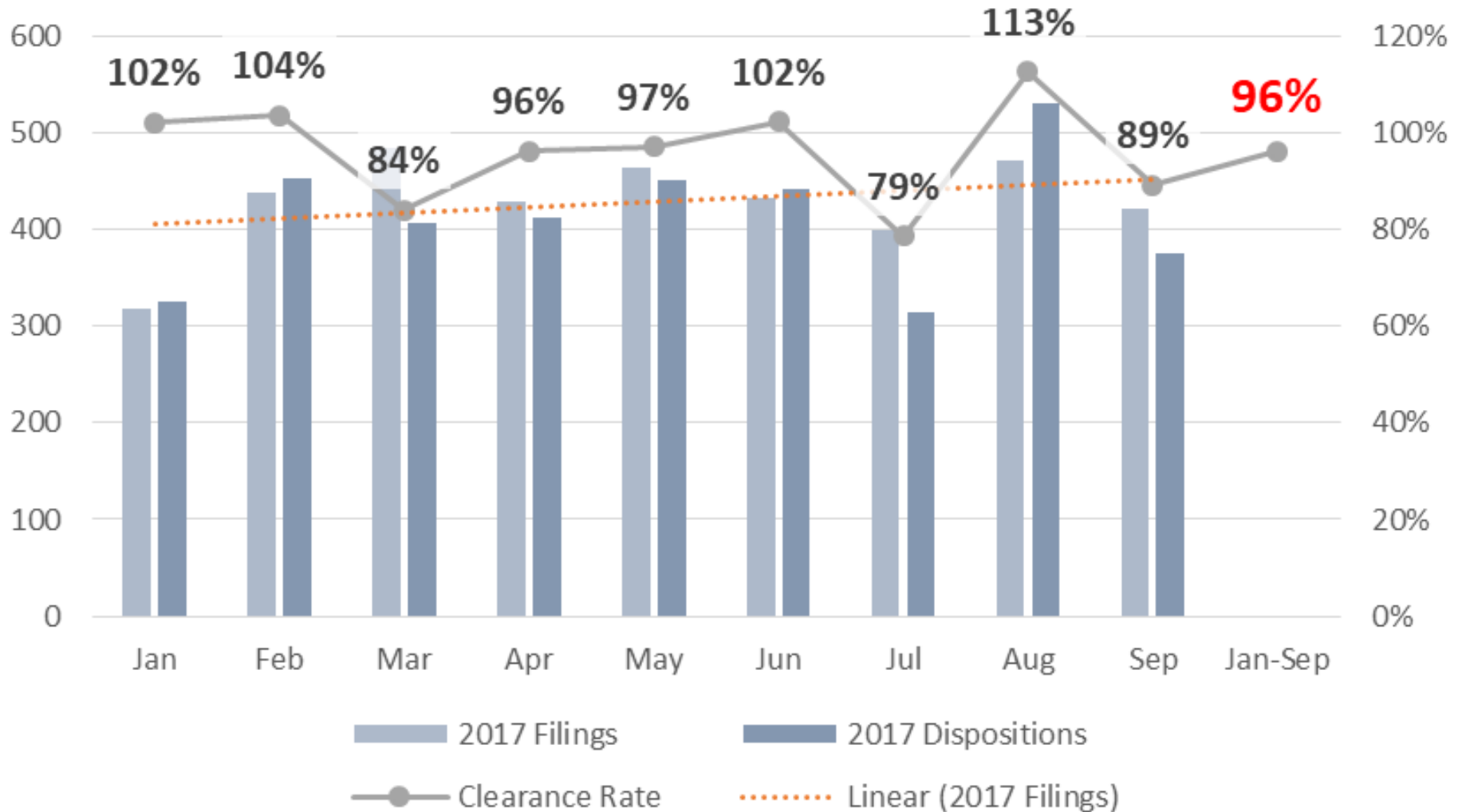
- Baseline Determination
 - Filings and disposition trends
 - Clearance rate trends
 - Active pending cases
 - Time standards

First Stage Analysis

- Basic Questions to Be Answered
 - How are trends changing over time?
 - Does the jurisdiction have a time standard?
 - If so, is there a backlog of pending cases?
 - What is the average/longest time to disposition?
 - What is the average number of events/case?
 - What is the average number of continuances/case?
 - How many pending cases are there by age category?
 - What percentage of cases are disposed by age of case?

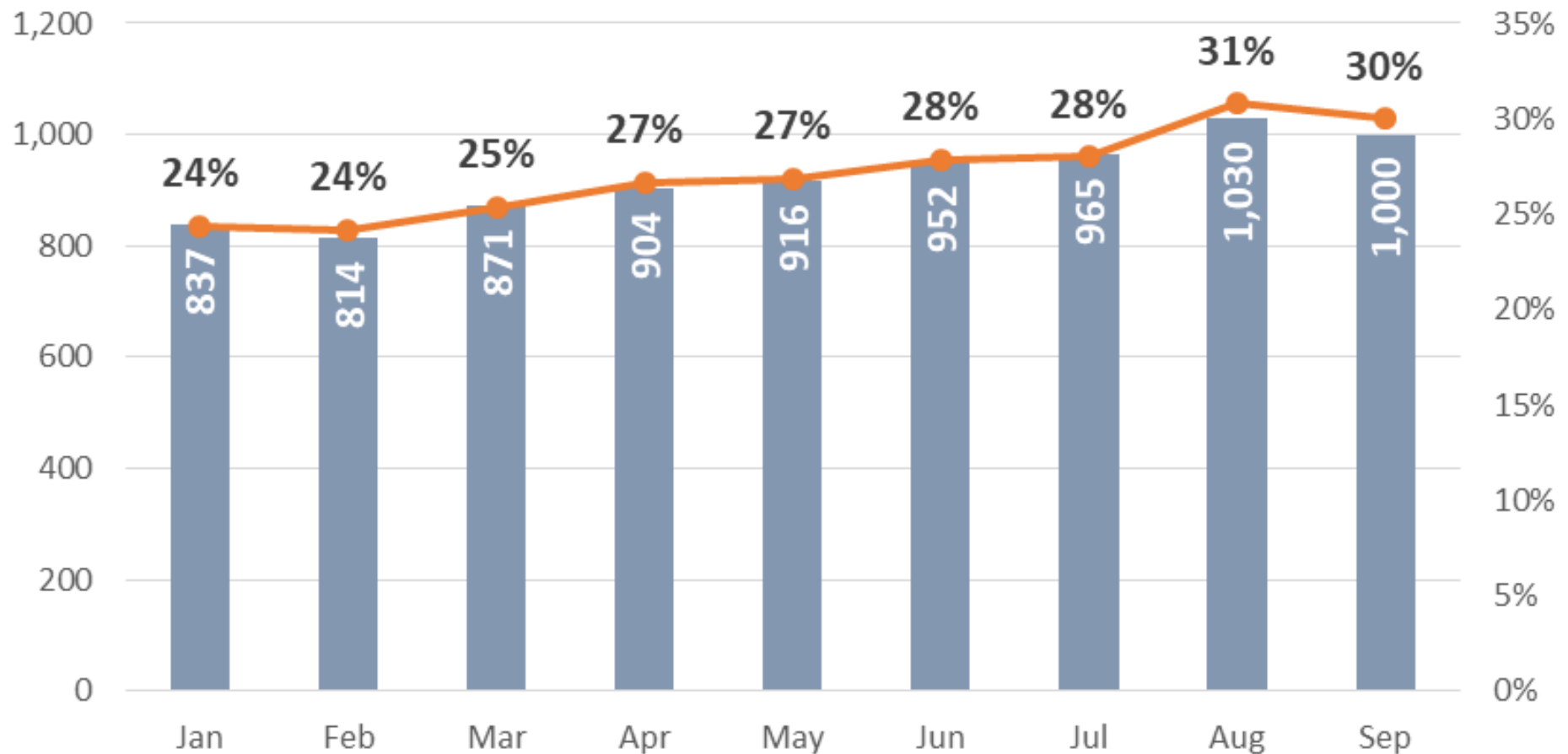
Filings, Disposition, & Clearance

2017 Complex Felony Cases



Backlog of Cases

2017 Complex Felony Backlog Cases

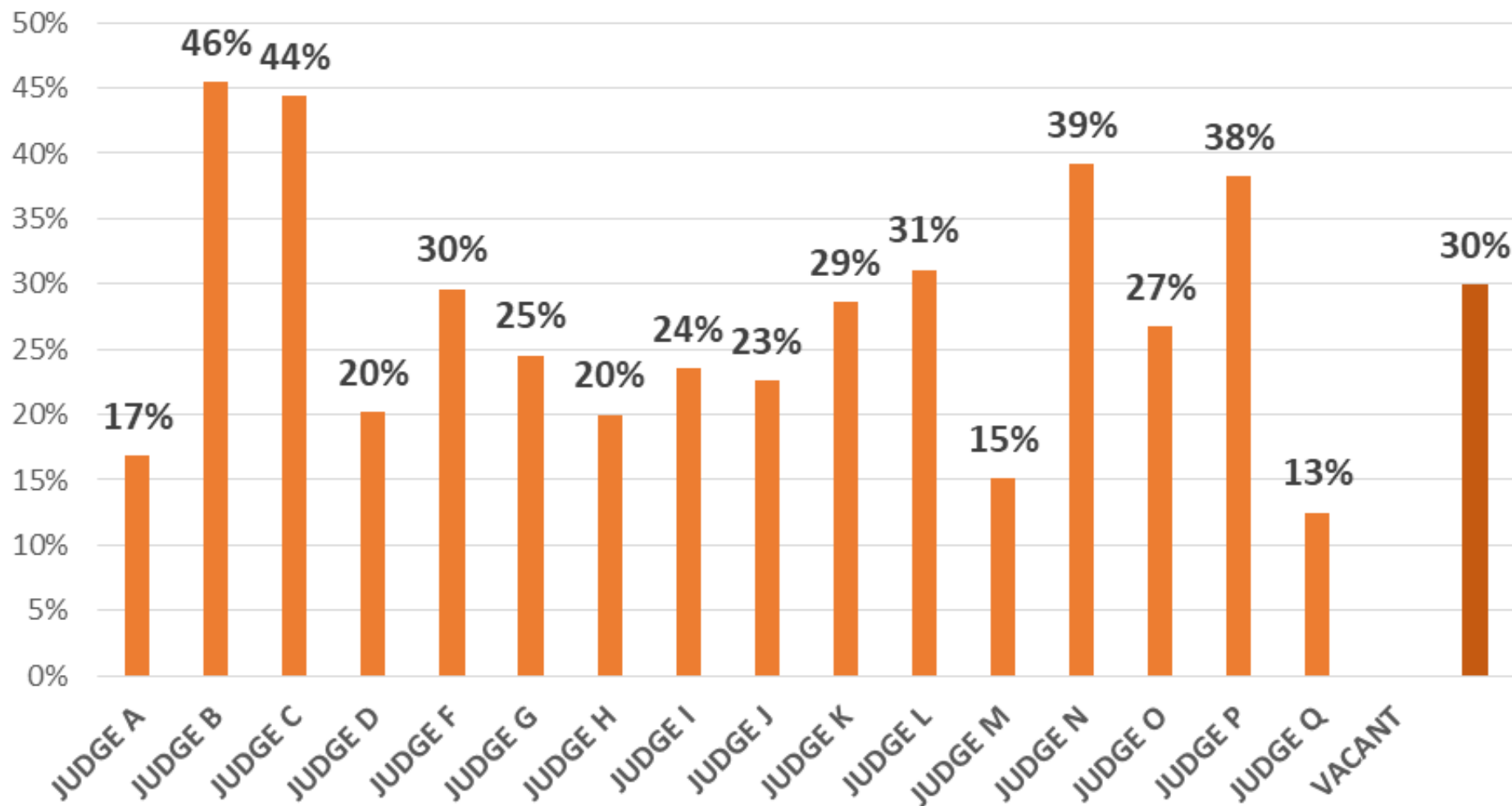


Second Stage Analysis

- Variation based on key factors, such as:
 - Case type/track (simple, medium, complex)
 - Docket/courtroom
 - Judge
 - Custody status
- Questions to be answered:
 - Are there major differences?
 - What external or internal factors may be at play?

Individual Analysis of Backlog

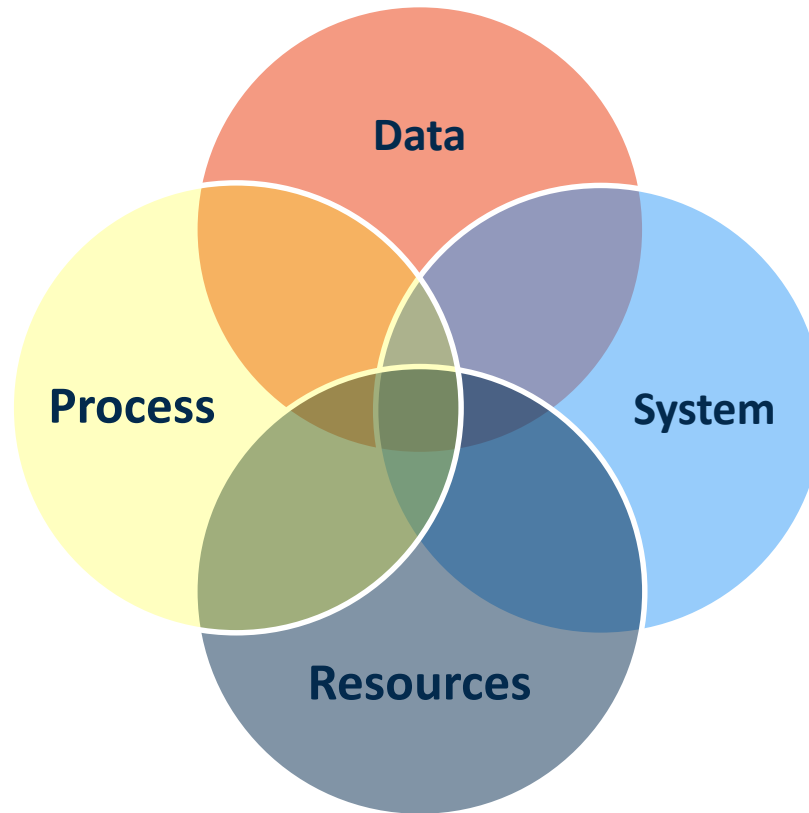
Sep 2017 % Backlog of Pending Cases



INTERPRETATION

Common Issues & Challenges

Issues for Consideration



Data Issues & Challenges

- Differences in how things are counted
- “Docket cleaning”
- Time standards
- No means for counting time
- Inability to link court & jail data

Process Issues

- Local practice for managing dockets
- Timeliness of information transmission
 - Discovery
 - Law enforcement reports
 - PSIs/risk assessment
- Indigency assessment & assignment of counsel

Resource Issues

- Trial team composition—availability of attorneys
- Availability of treatment beds
- Secure transportation of defendants/inmates

System Issues

- Legislative/policy changes
- External system delays
 - Crime labs
 - Competency evaluations
- Transfers to correctional facilities



elaineb@jmijustice.org



SafetyAndJusticeChallenge.org