

# CRIME VICTIMS ARE JUSTICE REFORM ALLIES

GIVING VICTIMS A VOICE

National Center for Victims of Crime



Supported by the John D. and Catherine T. MacArthur Foundation

The logo for The National Center for Victims of Crime. It consists of a black rectangular box. Inside the box, the words 'THE NATIONAL CENTER FOR' are written in a small, white, all-caps, sans-serif font. Below this, the words 'Victims of Crime' are written in a larger, white, sans-serif font, with 'Victims' and 'of' in lowercase and 'Crime' in all-caps. Two thin, wavy yellow lines are positioned above and below the text.

# Who are we?



- We help state, local, and grassroots organizations better provide for victim needs
- We advocate for victims' rights
- We are a training and technical assistance provider

# What we know:

- 6 in 10 crime victims want a criminal justice system that prioritizes prevention and rehabilitation over punishment\*
  - This holds true even among violent crime victims
  - Most crime victims value alternative-to-incarceration programs such as mental health and drug treatment, community supervision, and community services programs
- Many crime victims do not support policies that would expand private prisons, and most crime victims believe additional law enforcement funding should go to\*\*:
  - Providing trainings for police on how to deescalate situations for individuals with mental illness and
  - Providing diversion programs for people with drug addiction issues (36% of those surveyed)

\*Data taken from the 2016 National Survey of Victims' Views of 800 respondents

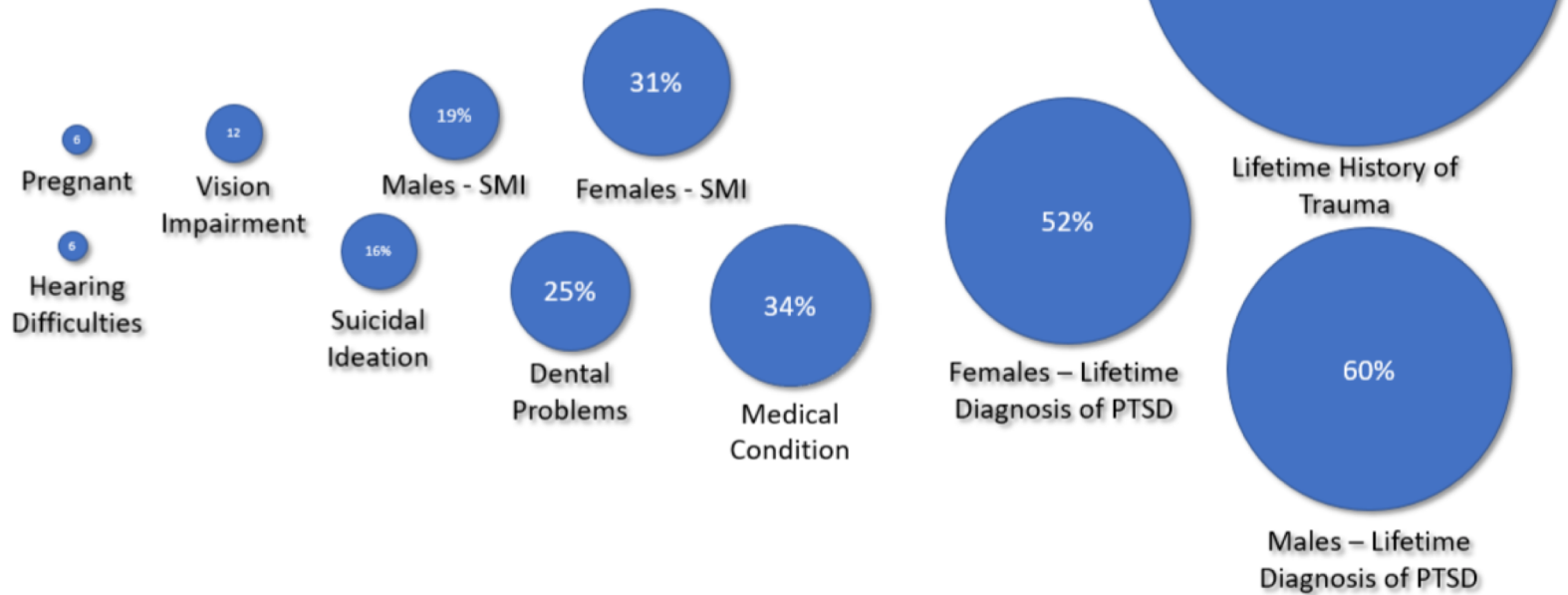
\*\*Data taken from a 2017 David Binder Research survey of 3,000 respondents

# What do we believe?



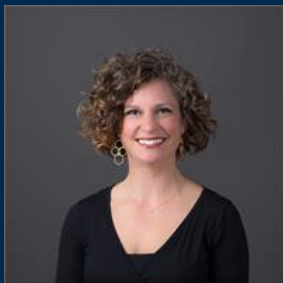
- Victims' rights need to be considered in justice reform
- Reformers and victims should see one another as allies, not adversaries
- Victims need a voice if justice reform is to be equitable
- Traditional victim versus offender dichotomies are inaccurate
- In-jail populations may also be victims and experience resulting trauma

# Percentage of in-jail populations who are or have:



# PANELISTS

THE NATIONAL CENTER FOR  
**Victims of Crime**



*Abbey Stamp*

Multnomah  
County, OR



*Ronald Simpson-Bey*

JustLeadershipUSA



Anna Harper-Guerrero

Emerge! Center Against  
Domestic Abuse

Please contact us at  
[sjchallenge@victimsofcrime.org](mailto:sjchallenge@victimsofcrime.org) with questions  
or technical assistance requests.



SafetyAndJusticeChallenge.org